

2009

2010 1



2010



1. 2003  
CNNIC 1 6 84  
CNNIC CNNIC 2001  
World Internet Project, WIP  
18 84 2005 18 74 WIP  
CNNIC

2. Pocket PC PDA ( )

3. WiFi HSDPA WCDMA CDMA2000 GPRS  
WiFi

4. 2009 12 2

5. ( )

6. 2001  
2003  
World Internet Project, WIP  
Asia -Pacific Internet Research Alliance, APIRA

7.1

.com.mo	1949	69%
.org.mo	368	13%
.mo	264	9%
.gov.mo	146*	5%
.edu.mo	82	3%
.net.mo	9	0.3%
	2818	100%

\* ; 2009 12

\* .mo

\* .gov.mo

7.1 .mo , .com.mo , 69%,  
 .org.mo, 13%, .mo .gov.mo .edu.mo, 9% 5% 3%, 0.3% .net.mo  
 2009 12 52 78

7.2

2009

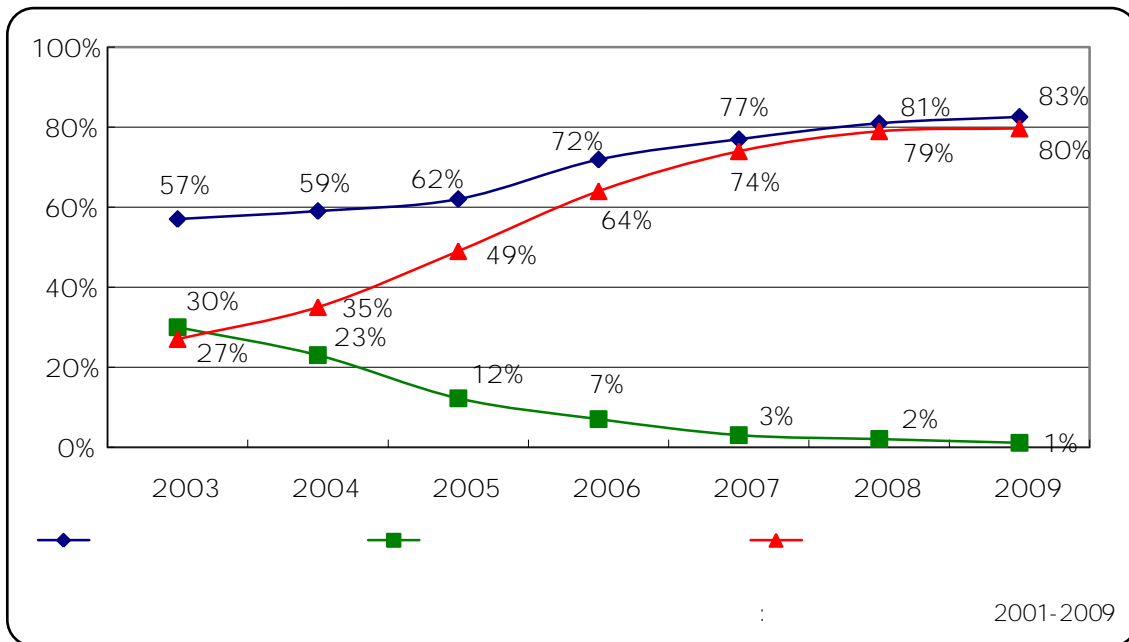
		*	*
17	14	1.8	13.5
	83%	1%	80%
	100%	1%	97%

07-08 167,187 08 09  
 09 169,719

\*

7.3

2003	57%	30%	27%
2004	59%	23%	35%
2005	62%	12%	49%
2006	72%	7%	64%
2007	77%	3%	74%
2008	81%	2%	79%
2009	83%	1%	80%



7.1

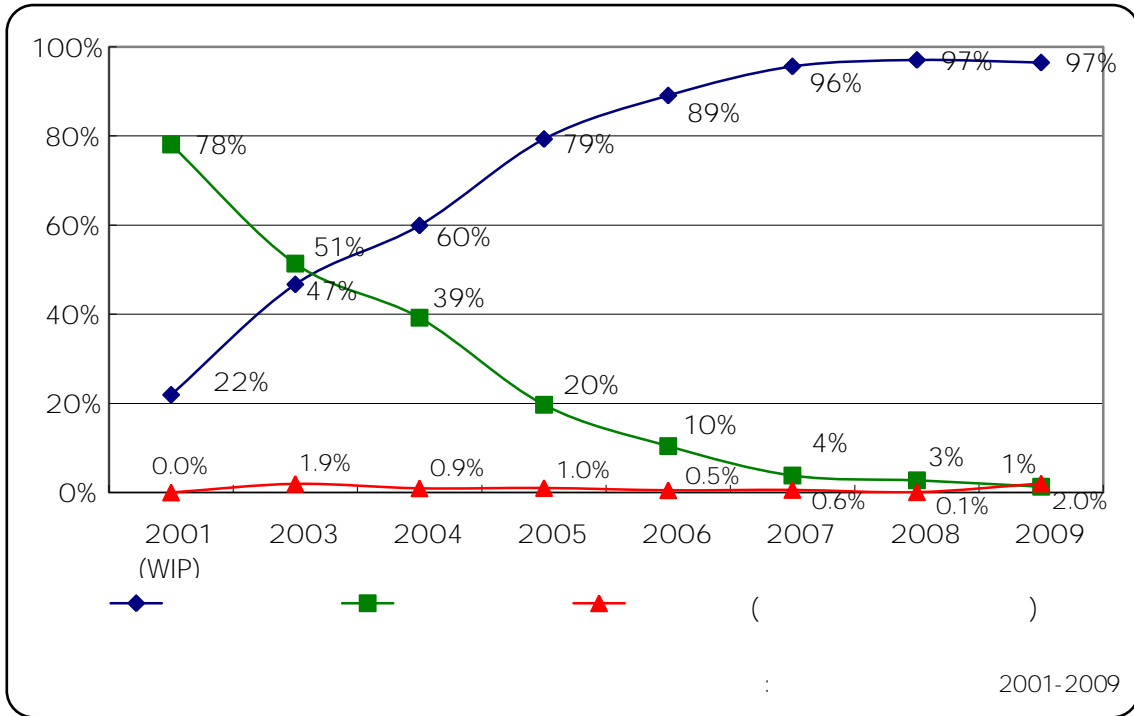
7.4

1

			( )
2001 <sup>(2)</sup>	22%	78%	0.0%
2003	47%	51%	1.9%
2004	60%	39%	0.9%
2005	79%	20%	1.0%
2006	89%	10%	0.5%
2007	96%	4%	0.6%

2008	97%	3%	0.1%
2009	97%	1%	2.0%

(1)2002  
(2) WIP



7.2

2009 83%

97% 1% 2001 2009 22%

97% 78% 1%

2009 CNNIC 6 84

36.5 52.2 70% 2.5%

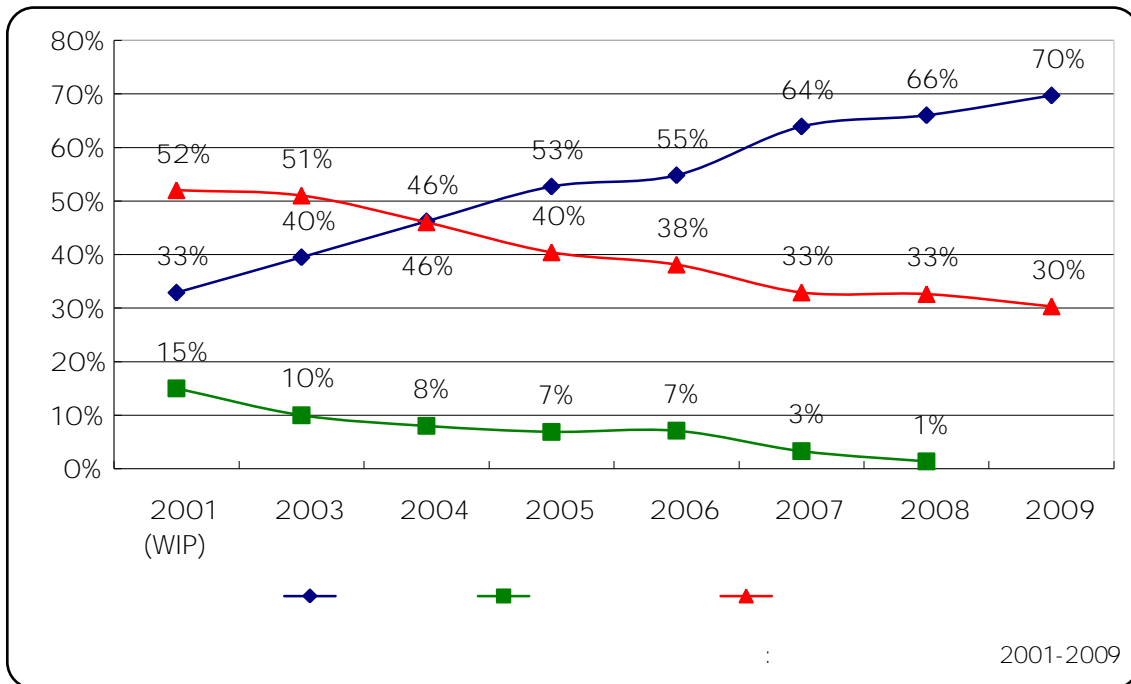
35.2 37.8

WIP	18	84	29.1
44.8	65%	2.7%	27.9 30.3

7.5

2001 <sup>1</sup>	33%	15%	52%
2003	40%	10%	51%
2004	46%	8%	46%
2005	53%	7%	40%
2006	55%	7%	38%
2007	64%	3%	33%
2008	66%	1%	33%
2009	70%	-	30%

(1)WIP



7.3

7.5

2001

33%

2009

70%

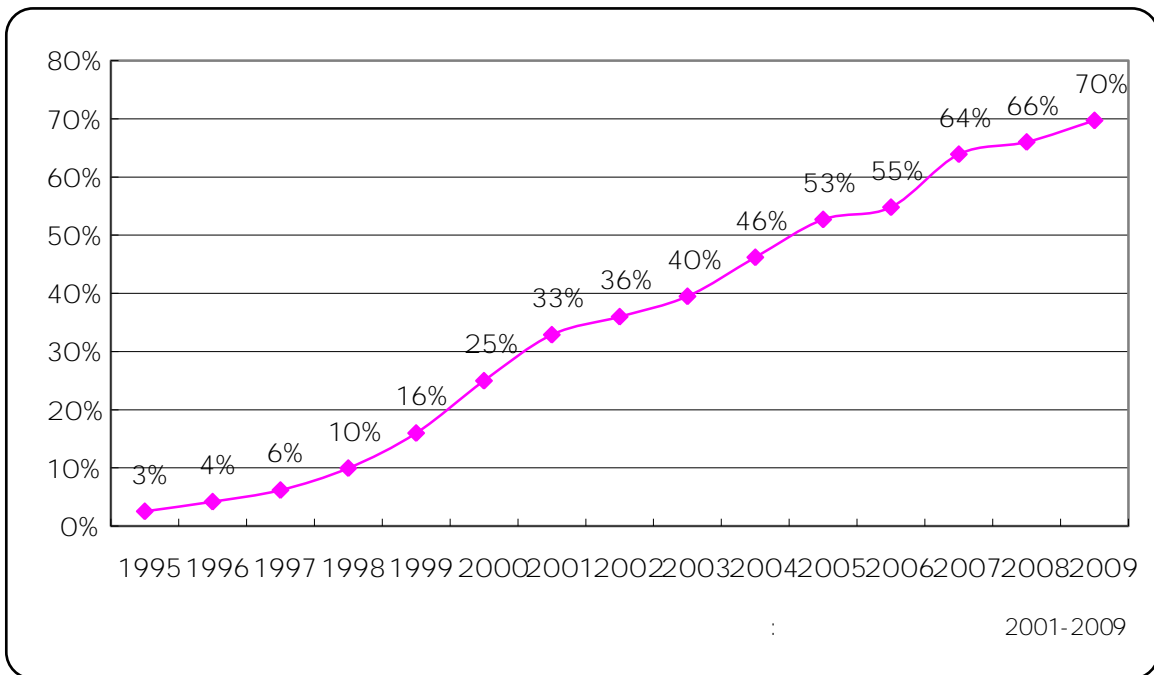
2008

7.6

1995 2009

7.6

1995	3%
1996	4%
1997	6%
1998	10%
1999	16%
2000	25%
2001	33%
2002	36%
2003	40%
2004	46%
2005	53%
2006	55%
2007	64%
2008	66%
2009	70%



7.4

1

7.7

	2003	2004	2005	2006	2007	2008	2009
	42%	49%	53%	59%	68%	69%	73%
	37%	43%	53%	52%	60%	63%	67%

7.7

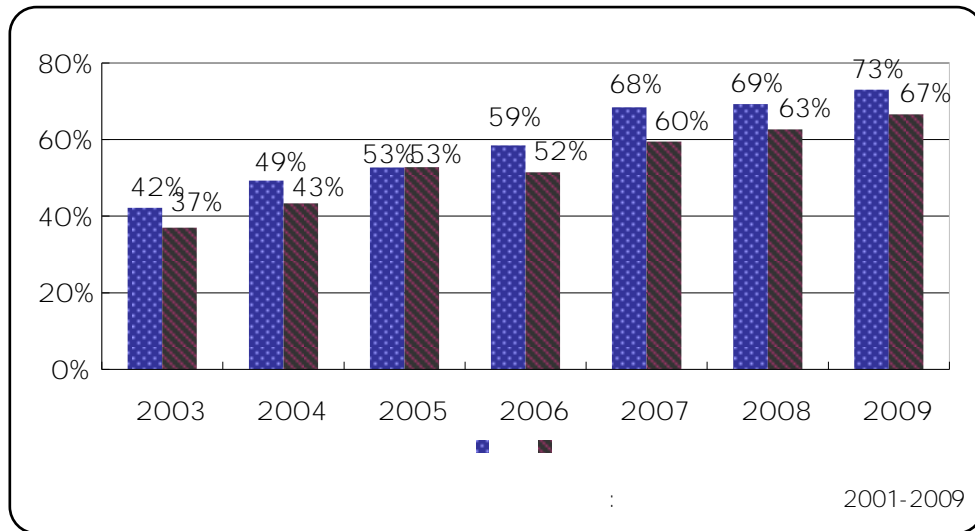
2005

53%

2009

73%

67%



7.5

2

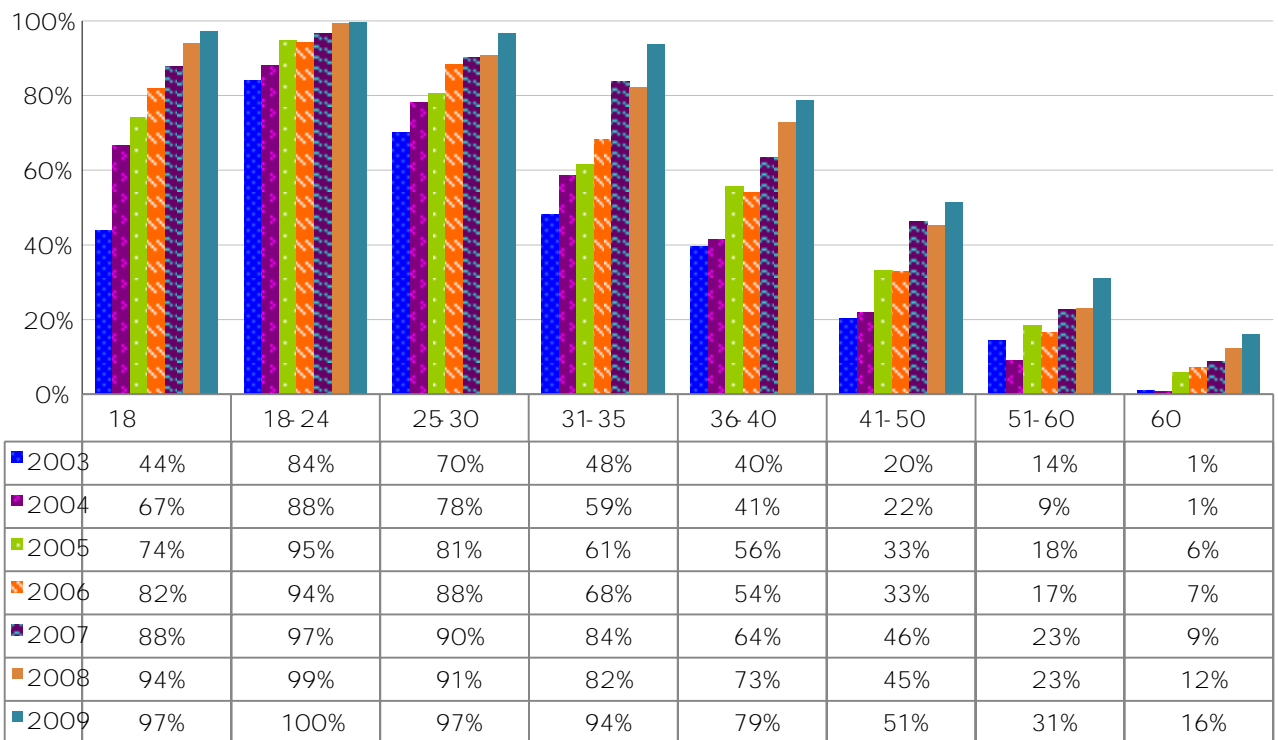
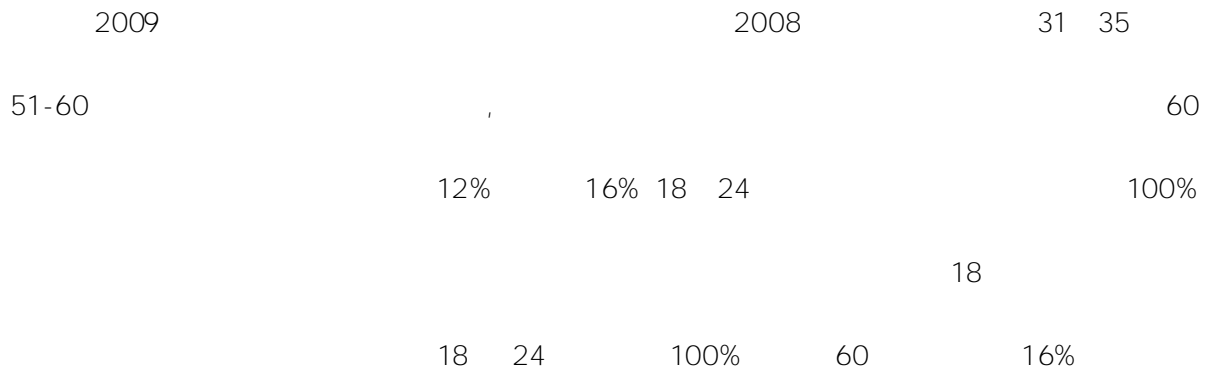
7.8

	2003	2004	2005	2006	2007	2008	2009
18	44%	67%	74%	82%	88%	94%	97%
18-24	84%	88%	95%	94%	97%	99%	100%
25-30	70%	78%	81%	88%	90%	91%	97%
31-35	48%	59%	61%	68%	84%	82%	94%
36-40	40%	41%	56%	54%	64%	73%	79%
41-50	20%	22%	33%	33%	46%	45%	51%

2010 1

51-60	14%	9%	18%	17%	23%	23%	31%
60	1%	1%	6%	7%	9%	12%	16%

7.8 2003 2009



: 2001-2009

7.6

3

7.9

	2003	2004	2005	2006	2007	2008	2009
	54%	72%	80%	86%	91%	95%	98%
	72%	78%	83%	78%	92%	94%	94%
	68%	88%	81%	89%	87%	86%	96%
	36%	32%	52%	43%	52%	72%	59%
	22%	25%	27%	34%	45%	44%	51%
	13%	11%	17%	24%	24%	28%	31%
	42%	50%	33%	18%	-	67%	50%

2009

7.9

98% 94% 96%

10

07 08

09 08

13

59%



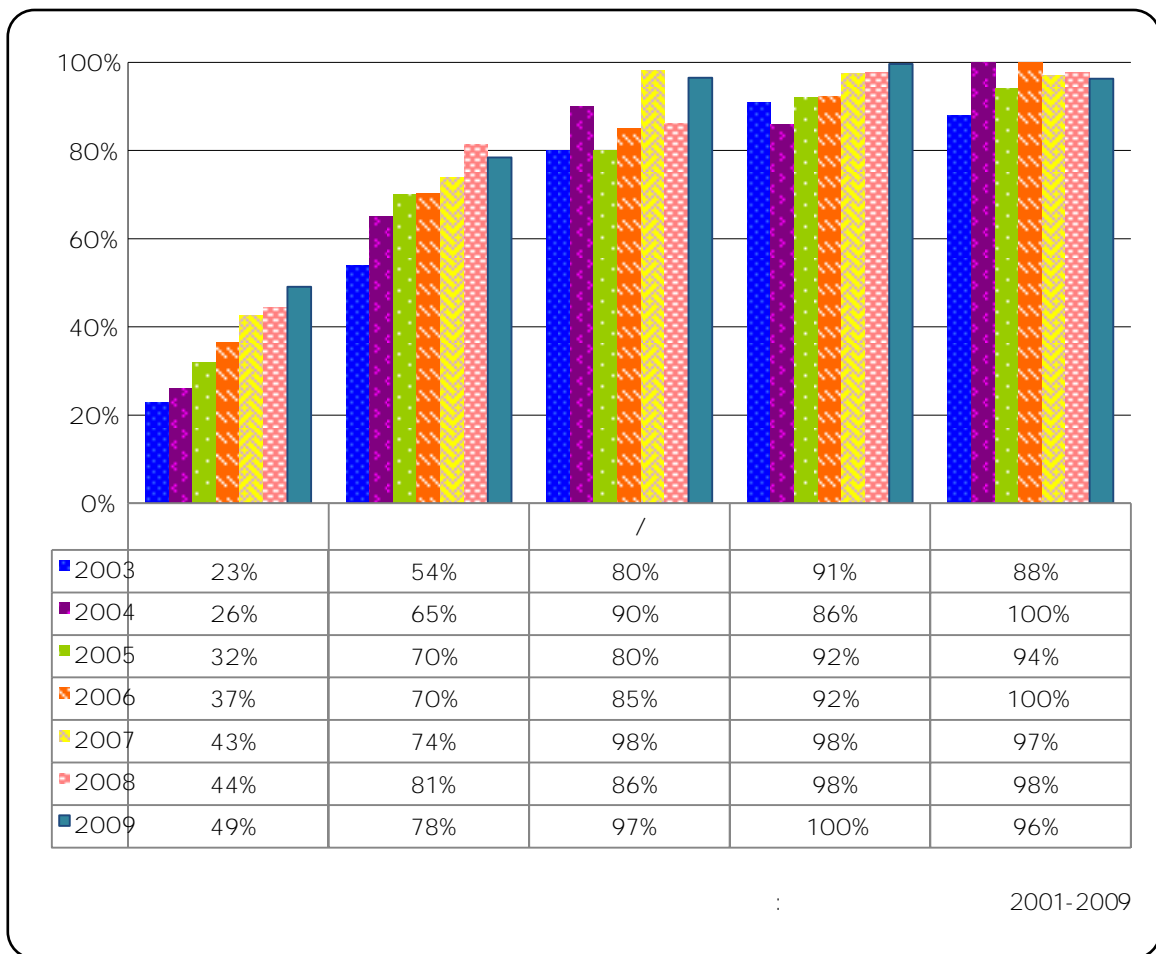
4.

7.10

	2003	2004	2005	2006	2007	2008	2009
	23%	26%	32%	37%	43%	44%	49%
	54%	65%	70%	70%	74%	81%	78%
/	80%	90%	80%	85%	98%	86%	97%
	91%	86%	92%	92%	98%	98%	100%
	88%	100%	94%	100%	97%	98%	96%

7.10 2009

97% 11



7.8

5.

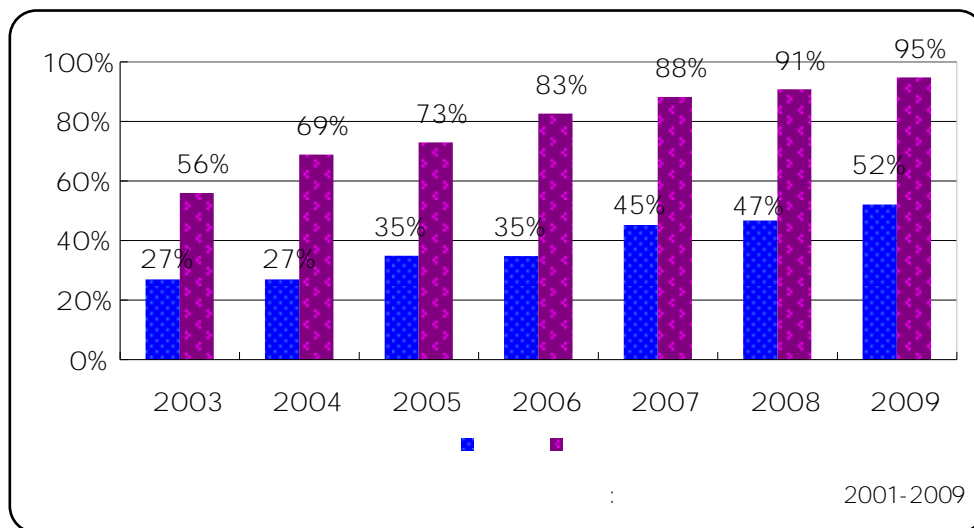
7.11

	2003	2004	2005	2006	2007	2008	2009
	27%	27%	35%	35%	45%	47%	52%
	56%	69%	73%	83%	88%	91%	95%

7.11

95% 52% 2009 2008

5 4



7.9

6.

7.12

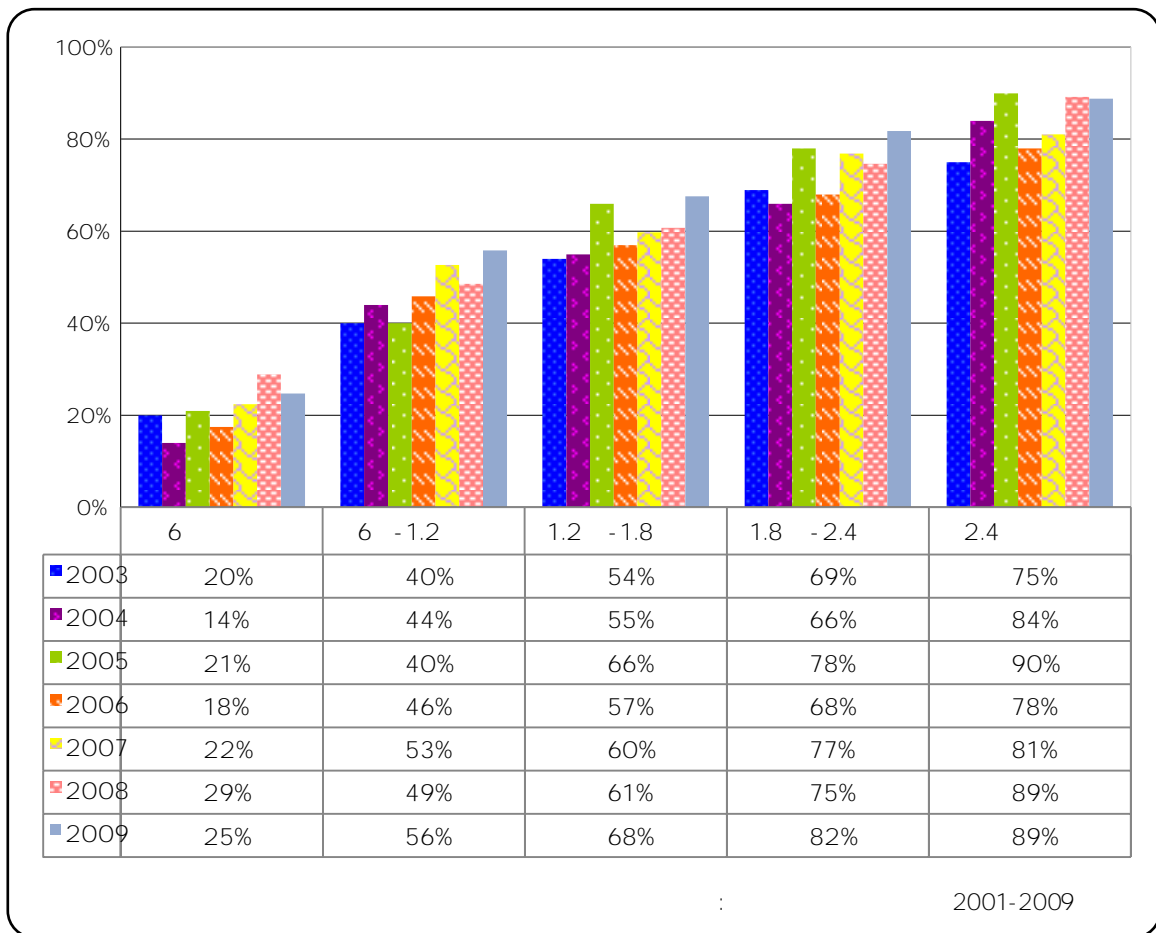
	2003	2004	2005	2006	2007	2008	2009
6	20%	14%	21%	18%	22%	29%	25%
6 -1.2	40%	44%	40%	46%	53%	49%	56%
1.2 -1.8	54%	55%	66%	57%	60%	61%	68%
1.8 -2.4	69%	66%	78%	68%	77%	75%	82%

2.4	75%	84%	90%	78%	81%	89%	89%
-----	-----	-----	-----	-----	-----	-----	-----

2008 7.12 6 2.4

, 2008 6 -1.2 1.2 -1.8

1.8 -2.4 7



7.10

1

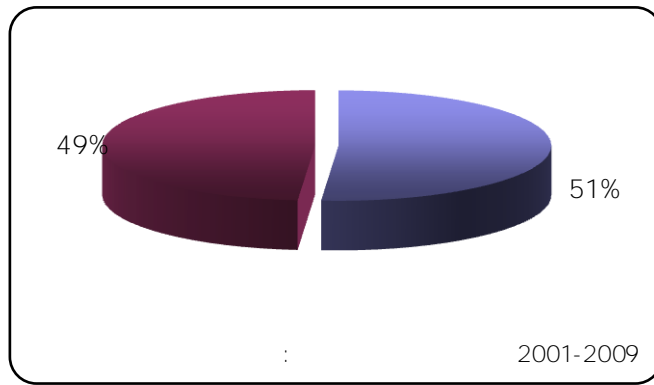
7.13

--	--

7.13

51%

49%



7.11

2

7.14

18	18-24	25-30	31-35	36-40	41-50	51-60	60
20%	19%	16%	10%	12%	15%	6%	2%

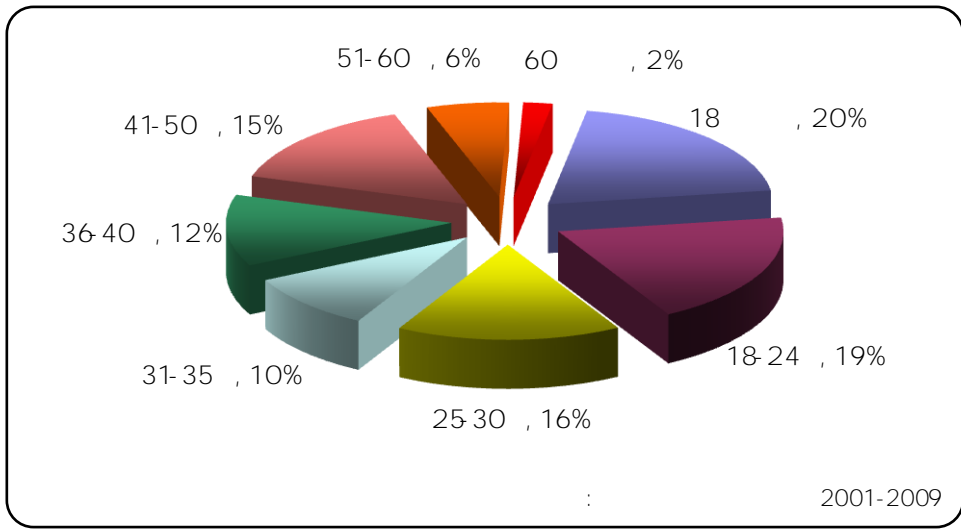
7.14

18

18

24

50



7.12

3

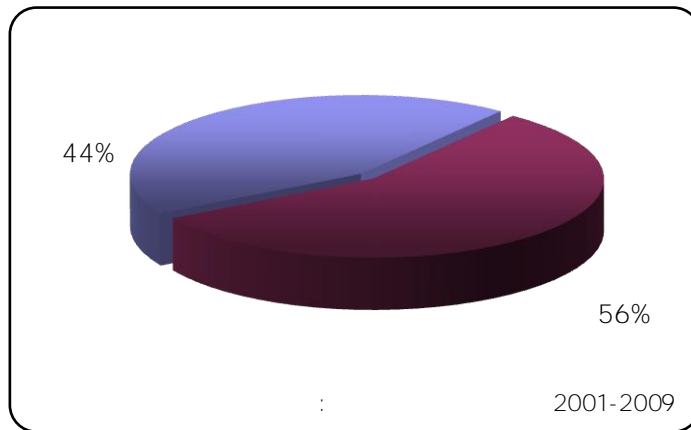
7.15

44%	56%

7.15

56%

44%



7.13

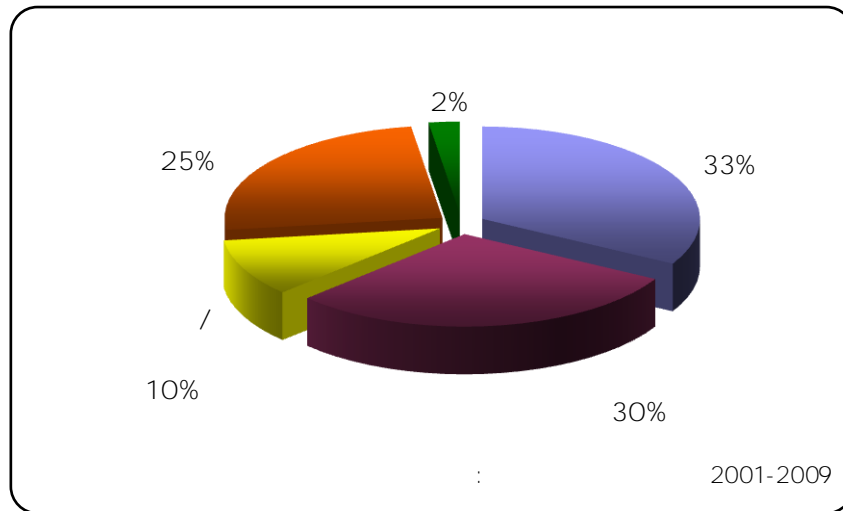
4

7.16

		/		/
33%	30%	10%	25%	2%

7.16

25% / / 10% 2%



7.14

5

7.17

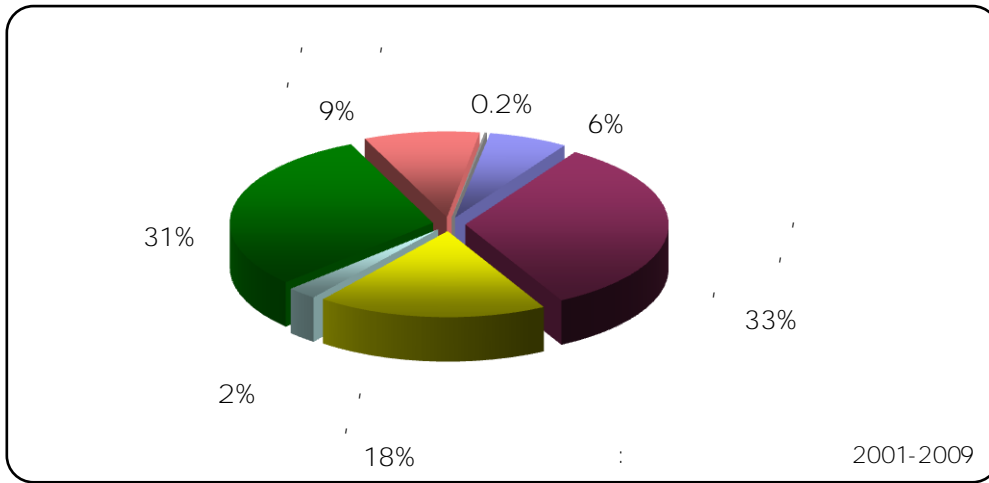
6%	33%	18%	2%	31%	9%	0.2%

7.17

/ /

31% 33%

18%



7.15

6

7.18

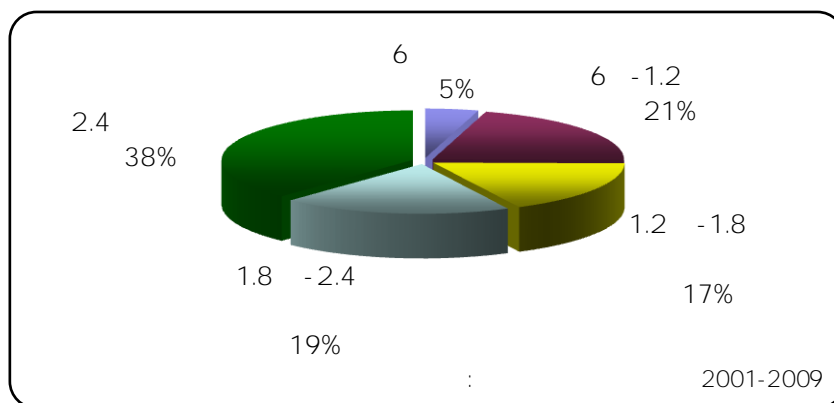
6	6 -1.2	1.2 -1.8	1.8 -2.4	2.4
5%	21%	17%	19%	38%

7.18

6

5%                      2.4                      38%

17%    21%



7.16

1

7.19

	/						
97%	29%	11%	5%	3%	4%	4%	0.8%

7.19

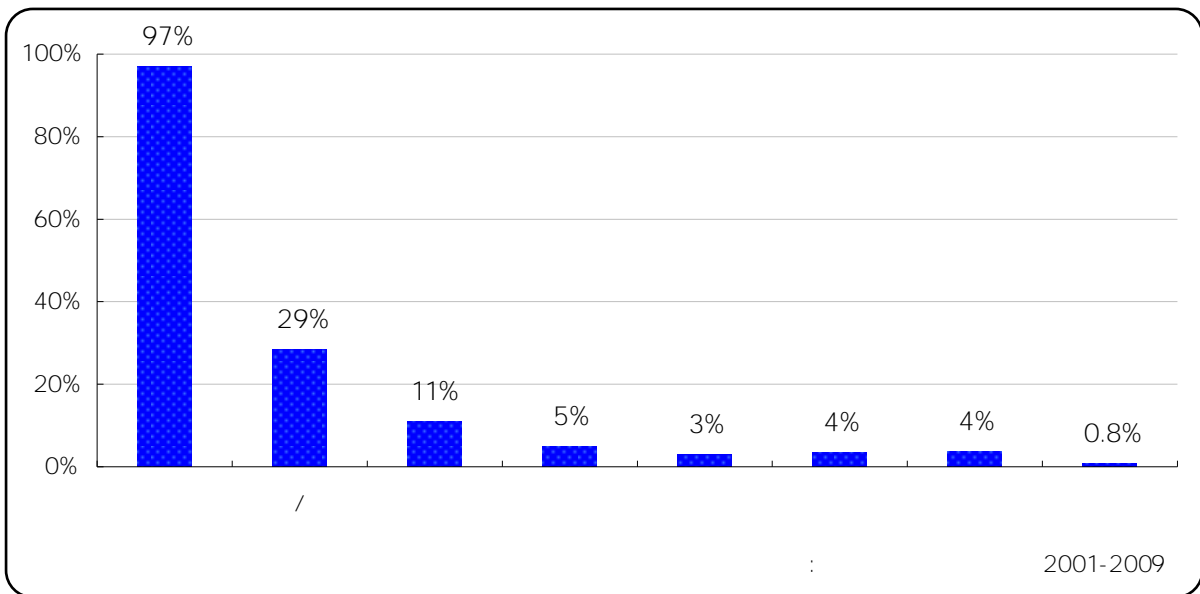
/

09

3

2

4%



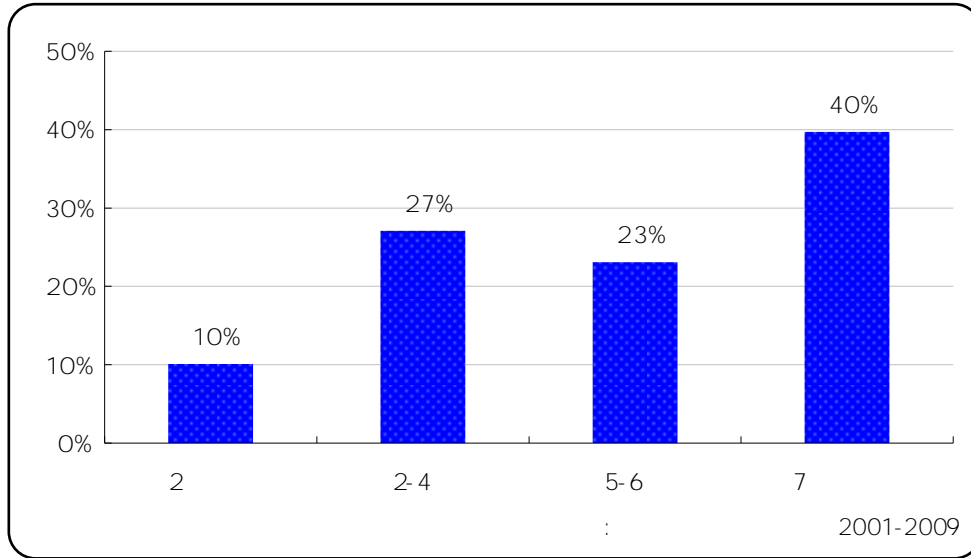
7.17

2a.

7.20

2	10%
2-4	27%
5-6	23%
7	40%

7.20  
 10% 2 4 27%  
 5 7 23% 7 40%  
 6 15



7.18

2b.

7.21

	85%
	5%
GPRS HSDPA, WiFi	12%
( / / WiFi WLAN )	26%
	1%
	0.1%
	7%

85%

5%

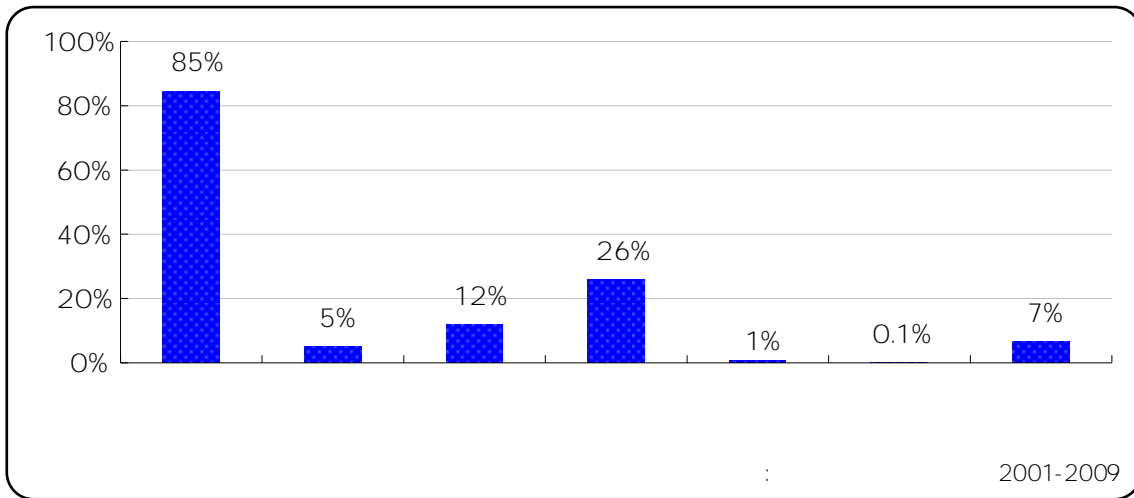
12%

/ /

WiFi

26%

38



7.19

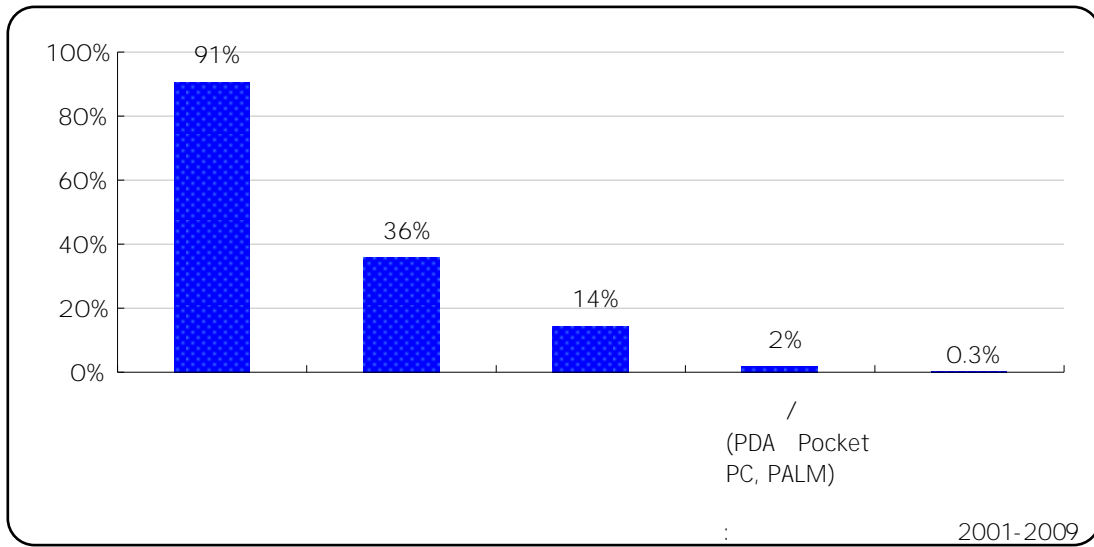
2c.

7.22

	91%
	36%
	14%
/ (PDA Pocket PC, PALM)	2%
	0.3%

7.22 , , , 36%,

14%, 2.3% /



7.20

3

7.23

	18.6
6-17	17.9
18 84	18.8

18.6

6 17

17.9

18 84

18.8

4.

5.5

5

7.24

<b>1</b>	<b>2</b>	<b>3</b>	<b>4</b>	<b>5</b>	<b>6</b>
10%	7%	3%	1%	1%	1%
<b>7</b>	<b>8</b>	<b>9</b>	<b>10</b>	<b>11</b>	<b>12</b>
2%	3%	12%	15%	14%	15%
<b>13</b>	<b>14</b>	<b>15</b>	<b>16</b>	<b>17</b>	<b>18</b>
17%	19%	21%	21%	23%	26%
<b>19</b>	<b>20</b>	<b>21</b>	<b>22</b>	<b>23</b>	<b>24</b>
32%	47%	55%	54%	41%	28%

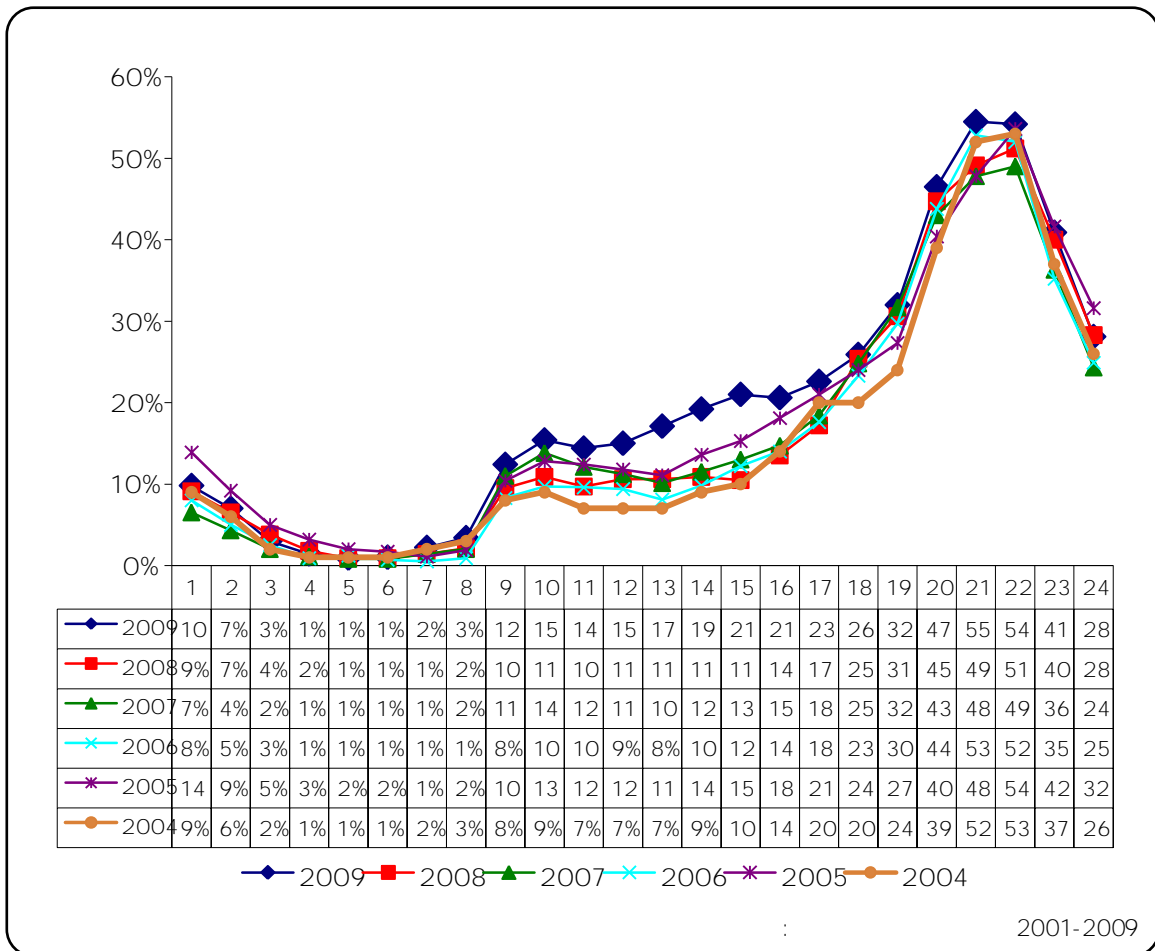
9

8

10

4

8



7.21

1 ( )

7.25

	57%
	42%
	40%
	30%
/	12%
	10%
	7%
	3%
	2%
	2%
	1%
	0.4%
	0.3%
	0.3%
	3%

7.25

57% 42% 40% 30%

2

7.25

2.1.

7.26

	81%
	51%
	82%
	43%

7.26

81%

51%

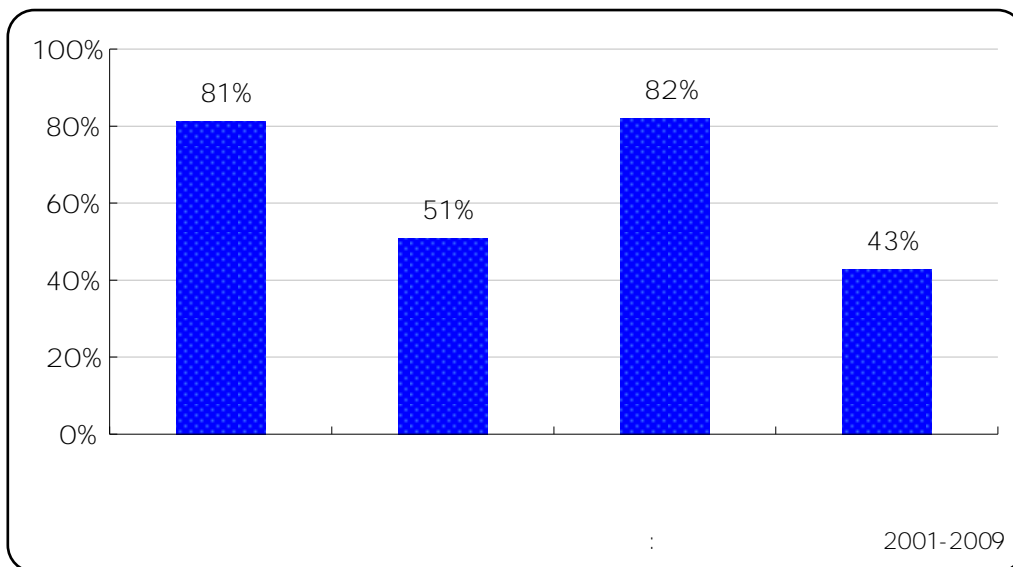
, 82%

43%

7.27

Yahoo(8 2%)

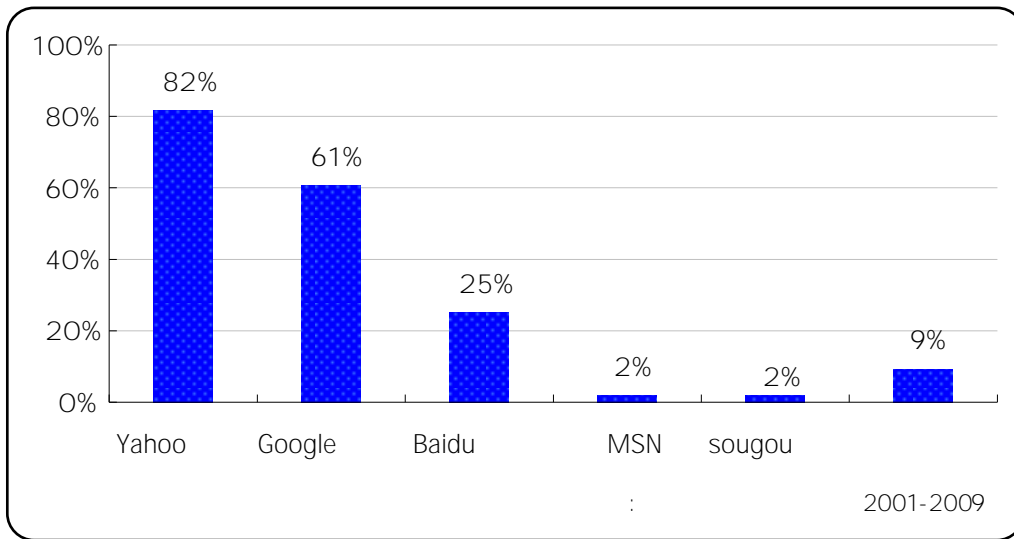
Google(6 1%)



7.22

7.27

Yahoo	82%
Google	61%
Baidu	25%
MSN	2%
sougou	2%
	9%



7.23

2.2.

7.28

	52%
/	44%
	25%
facebook	50%

7.28

52%

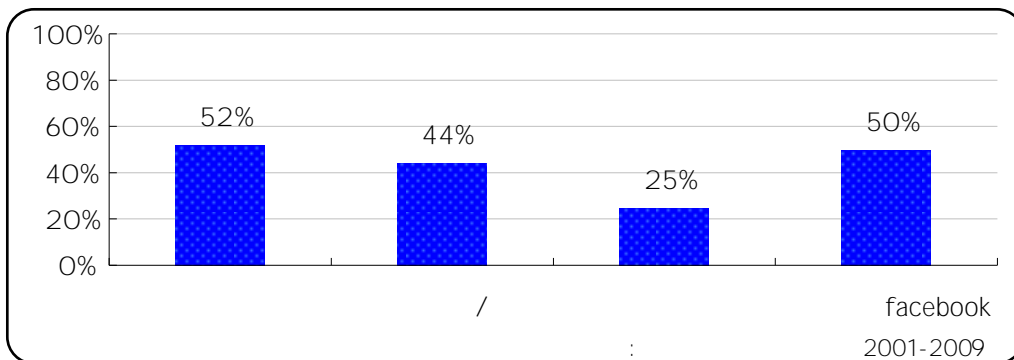
facebook

MSN

93%

QQ

21%



7.24

7.29

MSN Messenger	93%
QQ	21%
Skype	7%
Facebook	4%
Google Talk	2%
ICQ	1%
	9%

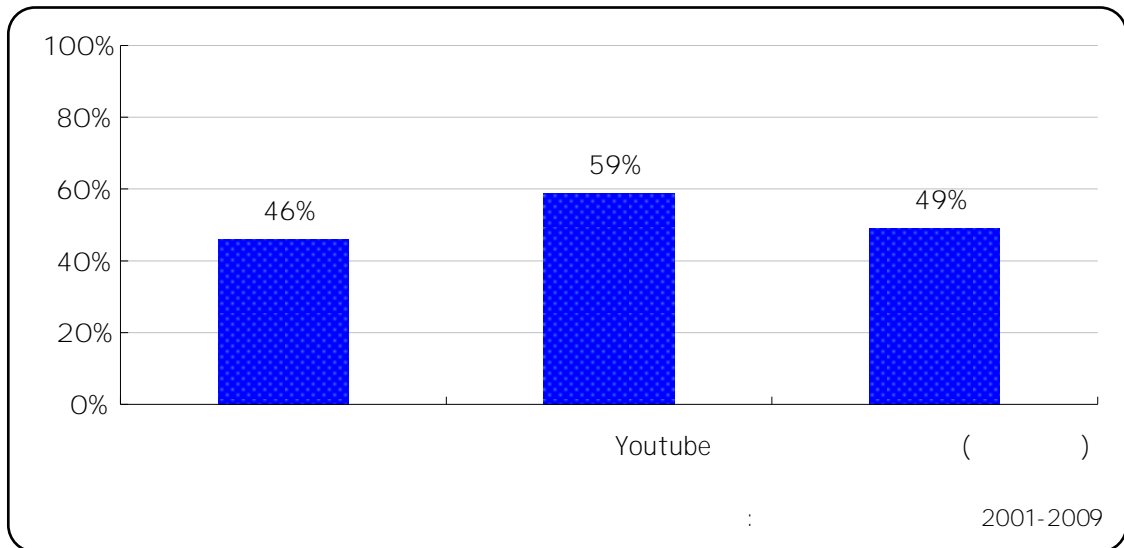
2.3.

7.30

	46%
Youtube	59%
( )	49%

7.30 46% 59%

Youtube 49% ( )



7.25

2.4.

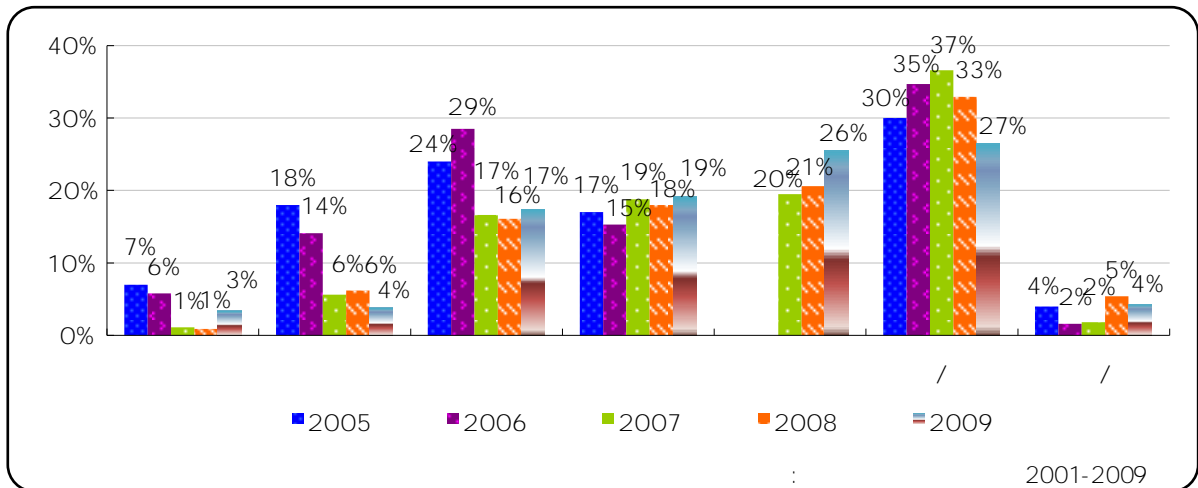
7.31

	2005	2006	2007	2008	2009
	7%	6%	1%	1%	3%
	18%	14%	6%	6%	4%
	24%	29%	17%	16%	17%
	17%	15%	19%	18%	19%
			20%	21%	26%
/	30%	35%	37%	33%	/ 27%
/	4%	2%	2%	5%	/ 4%

\* WIP 18

\* 09

/ /

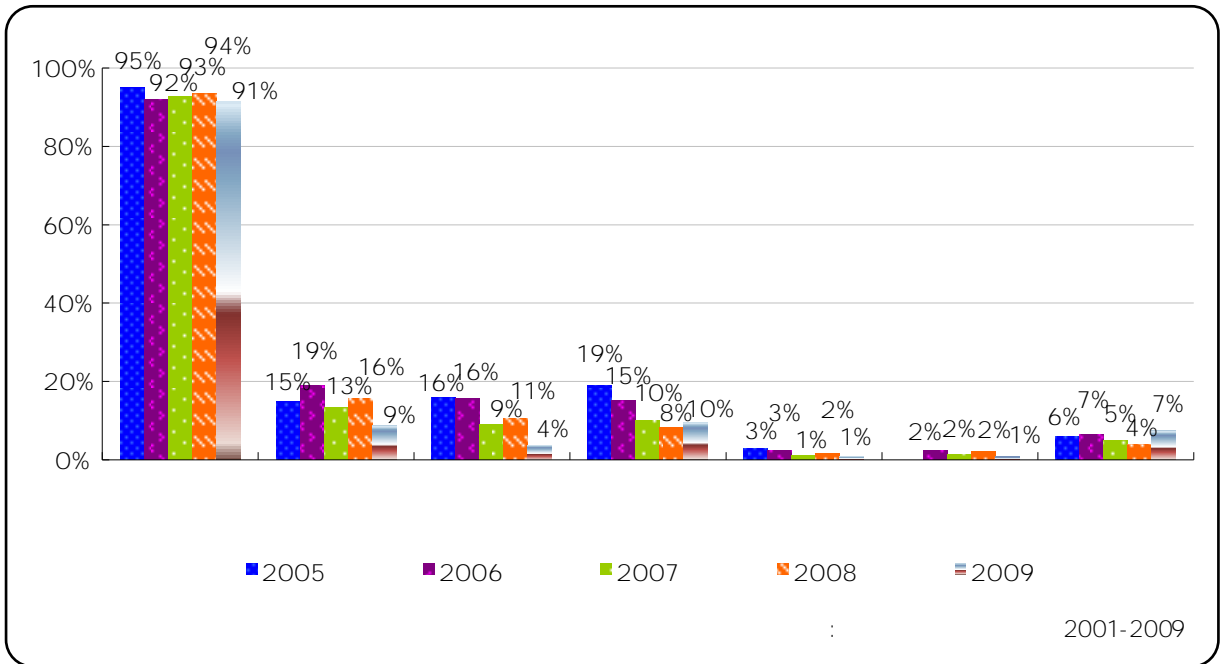


7.26

7.32

( )

	2005	2006	2007	2008	2009
	95%	92%	93%	94%	91%
	15%	19%	13%	16%	9%
	16%	16%	9%	11%	4%
( E-mail )	19%	15%	10%	8%	10%
( E-mail )	3%	3%	1%	2%	1%
( E-mail )		2%	2%	2%	1%
	6%	7%	5%	4%	7%



7.27

7.31 7.32 2009

7% (3% 4% )

26% 19%

(10%) 9% 4%

2%

1

7.33

	2003	2004	2005	2006	2007	2008	2009
/	33%	33%	37%	43%	39%	56%	59%
	17%	25%	20%	26%	19%	19%	22%
/	11%	17%	19%	16%	19%	13%	9%
	10%	11%	17%	14%	16%	13%	13%
/	17%	14%	15%	16%	10%	10%	7%
	5%	5%	6%	5%	4%	2%	2%
	3%	5%	4%	2%	3%	1%	1%
	5%	3%	3%	2%	2%	1%	1%
	1%	1%	2%	2%	1%	1%	1%
/	1%	1%	1%	2%	2%	2%	3%
	0.4%	0.3%	1%	0.4%	0.5%	0.2%	-
	0.1%	0.2%	1%	1%	1%	-	0.4%
	1%	-	1%	0.3%	0.2%	-	0.2%
	0.1%	-	0.4%	0.2%	0.2%	0.2%	0.4%
	0.1%	-	0.3%	-	1%	1%	-
	-	-	0.3%	1%	0%	0.2%	0.2%
/	-	0.1%	-	0.1%	-	1%	-
	-	-	-	-	-	-	3%
	4%	9%	7%	4%	10%	8%	8%
/	6%	4%	5%	2%	4%	1%	4%

/

/

/

2009

59%

22%

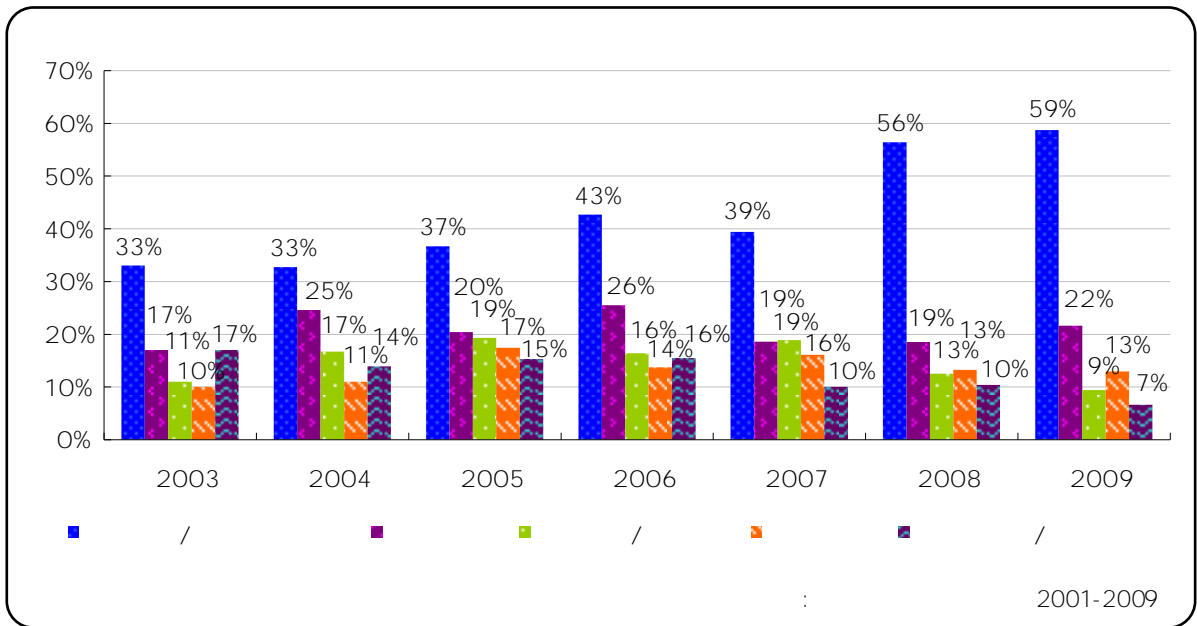
/

9%

13%

/

7%



7.28

2

7.34

1	5%
2-3	14%
4-6	17%
7-12	11%
1	6%
/	15%
	31%

2009

31%

15%

1

7.35

	2%	2%	2%
	7%	5%	7%
	71%	38%	59%
	14%	13%	14%
	2%	3%	2%
/	4%	41%	17%

\*14 84

7.35

2009

2.

7.36

	1%	3%	1%
	15%	15%	15%
	58%	36%	51%
	22%	13%	19%
	0.2%	1%	1%
/	3%	32%	14%

\*14 84

7.36

20%

22.2%

14%

/

3%

32%

3.

7.37

				/
" "/" "	8%	33%	58%	1%
" "/" "	32%	44%	21%	3%

\* 14-84

7.37

4.

7.38

	46%	46%	8%	1%
	44%	47%	9%	1%
	16%	70%	13%	1%

\* 14-84

7.38

13%

46%

44%

7.39

			/
7%	41%	51%	1%

\* 14-84

7%

		Wlan			
	2008	29%	2009	38%	
	12				
08	13			/	
08	10	1			
	2005				
			73%		
		24			
				3	
		18.6	, 6-17	17.9	, 18-84 18.8

3%

32%

/

2009 11 19 12 2  
6-84

CATI

1586

95%

2.51%

7512

6-84

5

7510

AAPOR

RR3

AAPOR

[http://www.aapor.org/default.asp?page=survey\\_methods/standards\\_and\\_best\\_practices/st](http://www.aapor.org/default.asp?page=survey_methods/standards_and_best_practices/st)

[andard\\_definitions#response](#)

38.1%

CR3

65.6%

2%-18%

- -

<http://www.macaointernetproject.net/>

[angus@e-research-lab.net](mailto:angus@e-research-lab.net)